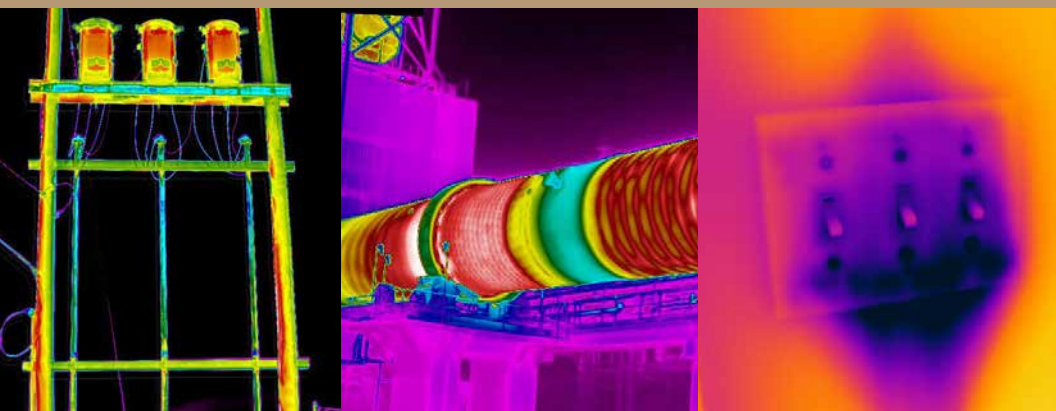




12 THINGS TO CONSIDER BEFORE BUYING AN INFRARED CAMERA

A Guide for Investing in Infrared



CONTENTS

12 Things to Consider Before Buying an Infrared Camera	3
#1 Buy an infrared camera with the highest image quality and measurement capabilities that your budget allows.	5
#2 Find a system with a built-in visible-light camera outfitted with an illuminator lamp and a laser pointer.	6
#3 Select a camera that delivers accurate and repeatable results.	7
#4 Look for an IR camera that stores and outputs standard file formats that are broadly supported.	8
#5 Consider the added value of an IR camera that links to Bluetooth-enabled T&M meters for assessing electrical load and moisture levels.	9
#6 New Wi-Fi apps for mobile devices help streamline the sharing of thermal images and data; select a camera compatible with this leading technology.	10
#7 Ensure you get a camera with ergonomic features that make your job as easy as possible and match the way you like to work.	11
#8 MSX Thermal Image Enhancement and Picture-in-Picture (P-i-P) will allow you to combine thermal and visible-light images for generating reports that are easier to understand.	12
#9 Not all reporting software products are created equal: Be sure to try the product first to find the one that's right for you.	13
#10 Choose a thermal imager with a wide temperature range so you can measure ambient and high-temperature spots in the same image.	14
#11 Look for cameras with a comprehensive, extended warranty program to protect your investment.	15
#12 Make sure your investment in an infrared camera is backed by a manufacturer who will provide ongoing technical support and training.	16

12 THINGS TO CONSIDER BEFORE BUYING AN INFRARED CAMERA

Buying an infrared camera is a big commitment. Even though prices have fallen dramatically over the past few years, you want to make sure that you're getting the best value for your money and choosing the camera that will serve you well over the long term. For some, cost will be the driving force, while for others, key hardware or software features are more important. Whichever camera you choose should offer quality and dependability, along with excellent technical support and service.

There are lots of choices in thermal imagers, ranging from extremely affordable point-and-shoot models to highly specialized HD-level science and research cameras. Finding the right fit for your needs can seem daunting. So along with the twelve things in this booklet to consider, you'll find it helpful to define what you're going to use the camera for and the work environments where you'll be performing inspections. Do your research on where thermal imaging technology is headed and the potential career and business opportunities on the horizon. In other words, think beyond your current needs to ensure you've done your best to future-proof your IR camera investment.

If your specialty is weatherization, maybe all you need is a simple, lower-cost point-and-shoot IR camera to spot missing insulation, poor weather stripping, and leaking windows. If you're an energy auditor, you may want a more advanced model that helps you generate professional, customized reports, or one that allows you to send images via a Wi-Fi mobile device to an agency that subsidizes improvements. Perhaps you need the benefit of higher resolution thermal imagery to help you build a strong marketing campaign for your services. Or you're a restoration or HVAC contractor who needs a camera that links to moisture meter data to better-quantify the extent of damage or to track down condensation problems and coolant leaks.

Predictive maintenance professionals also have a variety of needs that determine the kind of IR camera they should consider. A utility troubleman may only require a simple point-and-shoot camera to do a safety check of energized equipment before performing repairs or for doing quick inspections of connections. Another member on his crew might need a high-resolution thermal imager to scan substations and power lines from a safe distance as well as gather detailed and accurate temperature measurements. Facility maintenance personnel and electricians might benefit from a camera that provides flexible ergonomics, allowing them to comfortably point the imager around tight corners, down behind motors, or straight up for equipment inspections overhead.

As you can see, there are a variety of applications, features, and other factors to consider. With the help of the "12 Things" included in the following pages and your own list of needs, you'll be able to make a more informed IR camera buying decision. Of course, we at FLIR are always available to answer any questions and to help guide you through the process.

We want you to succeed and we back up that commitment with nearly 50 years of infrared camera experience -- an important consideration.

As the world's leading infrared camera manufacturer and with ITC, the world's largest infrared training organization, we know a thing or two about thermal imaging, which is why you can trust this publication to help you with making the right choice.

If you have a question on what is presented here, or want to explore more details about which infrared camera is best for you, please send us an email; flir@flir.com

Please note that the term "infrared camera" is used interchangeably with "thermal imager."

#1

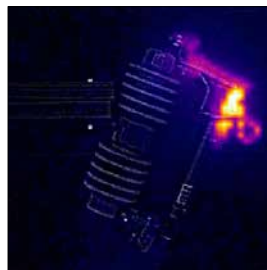
BUY AN INFRARED CAMERA WITH THE HIGHEST IMAGE QUALITY AND MEASUREMENT CAPABILITIES THAT YOUR BUDGET ALLOWS.

Most infrared cameras have fewer pixels than visible-light cameras, so pay close attention to detector resolution. Higher resolution infrared cameras can measure smaller targets from farther away and create sharper thermal images, both of which add up to more precise and reliable measurements.

Be aware of the difference between detector and display resolution. Some manufacturers will boast about a high resolution LCD and hide their low resolution detector when it's the detector resolution that matters most.

For instance, a 640×480 resolution LCD screen may be capable of displaying 307,200 pixels of image resolution. But if the IR detector only offers 19,200 resolution (160×120 pixels), the display resolution accomplishes little. The quality of the thermal image and its measurement data are always determined by the detector resolution, not the screen resolution.

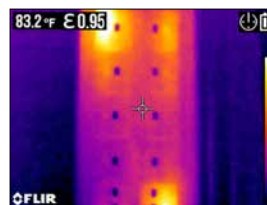
Higher resolution thermal imaging not only provides more accurate quantitative results, it is also very effective in showing finer detail findings to customers, supervisors, repair crews, and insurance companies that help shorten the decision-making process. Superior IR image quality is also valuable for generating clearer reports and for marketing your services.



80 x 60 pixels



320 x 240 pixels



160 x 120 pixels



640 x 480 pixels

#2

IF YOU NEED TO PRESENT FINDINGS TO OTHERS, FIND A SYSTEM WITH A BUILT-IN VISIBLE-LIGHT CAMERA OUTFITTED WITH AN ILLUMINATOR LAMP AND A LASER POINTER.

There's no need to carry a separate piece of equipment to take photos when many affordable IR cameras now include a built-in digital camera that simultaneously captures visible light and thermal images. Digital photos that correspond to your IR images will help you further document a problem and communicate its precise location to decision-makers. If your customer or supervisor needs to see a comprehensive report, you'll definitely want a thermal imaging camera with this feature. And be sure it includes an onboard lamp that doubles as a flashlight to illuminate darker areas.

Built-in laser pointers are also invaluable, especially for isolating the location of a target surrounded by similar-looking components, such as breakers, or for pinpointing problematic energized electrical equipment where you need to keep your distance. Laser markers show up clearly on visible light pictures to provide a reliable reference. They're also indicated on IR images as well as the thermal camera's display so you'll be confident you've captured all the necessary information.



Built-in LED lamps improve image clarity in low light.



Laser pointer marks the target for visible light reference images.

#3

SELECT A CAMERA THAT DELIVERS ACCURATE AND REPEATABLE RESULTS.

Infrared cameras don't just let you see differences in heat, they let you measure those differences. Measurement accuracy and consistency are very important factors when determining the value of a camera.

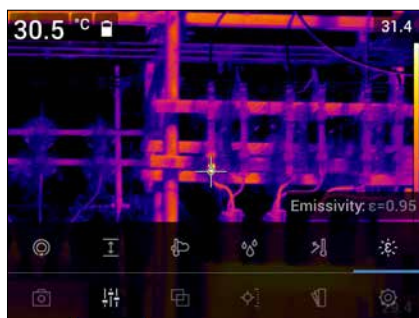
For best results, look for a thermal imager that meets or exceeds $\pm 2\%$ (or 3.6°F) accuracy. All FLIR cameras maintain that minimum standard, made possible by the company's ability to manufacture its own thermal imaging detectors.

But that's not the only criteria. In order to produce correct and repeatable results, your thermal imager should include in-camera tools for entering both "emissivity" and "reflected temperature" values.

An infrared camera that gives you an easy way to input and adjust both of those parameters will produce the accurate temperature measurements you need in the field to make the best decision.

Other helpful diagnostics to consider are multiple moveable spots and area boxes for isolating and annotating temperature measurements that can be saved as radiometric data and incorporated into findings for reports.

As you become more experienced with your infrared camera, these features will become more meaningful. But before you proceed with your buying decision, find out whether the thermal imager you like offers these capabilities.

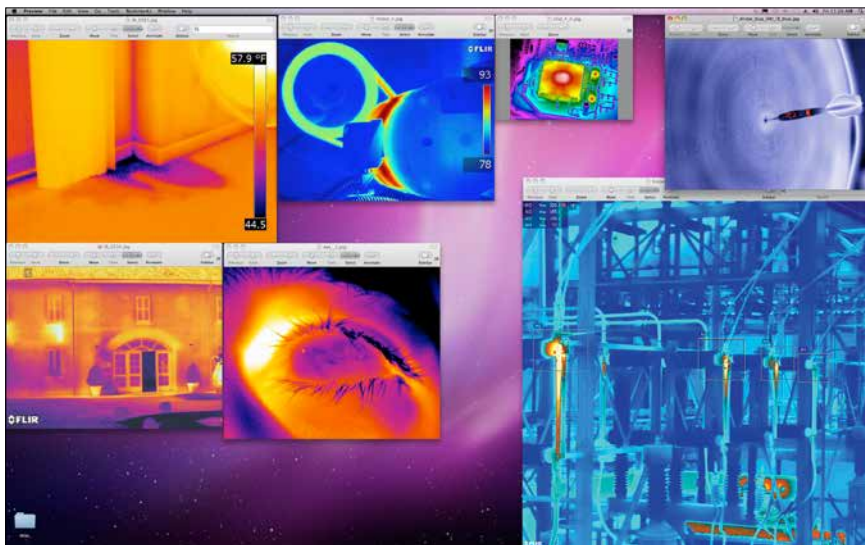


#4

LOOK FOR AN IR CAMERA THAT STORES AND OUTPUTS STANDARD FILE FORMATS THAT ARE BROADLY SUPPORTED.

Many infrared cameras store images in a proprietary format that can only be read and analyzed with specialized software. Others have an optional JPEG storage capability that lacks temperature information. FLIR, on the other hand, has the distinction of offering a standard JPEG with full temperature analysis embedded. This allows you to e-mail IR images to your customers or colleagues without losing that vital information. Radiometric JPEGs can also be imported from Wi-Fi compatible cameras to select mobile devices using apps that provide further image editing, analysis, and sharing. After all, you shouldn't have to waste time converting images. Request a demo from the infrared camera manufacturer and have them show you how the camera you're considering will output JPEGs without a bunch of extra steps.

Also, look for infrared cameras that allow you to stream MPEG 4 video via USB to computers and monitors. This is especially useful for capturing dynamic thermal activity where heating and cooling occurs rapidly and for recording motorized equipment or processes in motion. Some cameras feature composite video out for cabling to digital recorders while others include HDMI outputs. Mobile applications have also been developed that allow streaming video over Wi-Fi. All these capabilities will help you share findings more effectively and enhance your infrared inspections and reports.



#5

CONSIDER THE ADDED VALUE OF AN IR CAMERA THAT LINKS TO BLUETOOTH-ENABLED T&M METERS FOR ASSESSING ELECTRICAL LOAD AND MOISTURE LEVELS.

Test and measurement tools like FLIR MeterLink products allow certain thermal cameras to measure more than temperature to fully quantify the severity of moisture damage and electrical issues. These moisture and clamp meters wirelessly transmit vital diagnostic data such as humidity, amperage, voltage, and resistance directly to the camera. The data is annotated automatically to the thermal image and embedded in the radiometric JPEG to add support to findings. This provides extremely valuable information to help you determine the urgency of a problem and decide on the best solution.



#6

WI-FI APPS FOR MOBILE DEVICES HELP STREAMLINE THE SHARING OF THERMAL IMAGES AND DATA; SELECT A CAMERA COMPATIBLE WITH THIS LEADING TECHNOLOGY.

Many models of FLIR cameras, including the Exx-Series and T-Series, are Wi-Fi enabled for instant connection to smartphones and tablets running the FLIR Tools® Mobile app. This application allows user to import IR images to the mobile device for portable analysis, report generation, and sharing. The advantage of being able to send thermal images and IR inspection reports wirelessly from one part of a facility to another or by email from the field is huge when time is of the essence. The app also allows live streaming video for customers and co-workers to view inspections from a safe, convenient distance. FLIR Tools Mobile also lets users take remote control of many major T-Series camera functions like focus, image level and span adjustments, adding temperature measurement tools. This comes in handy when it's necessary to set the camera up on a tripod for monitoring equipment over time, for example.

Electrical contractors and thermographers can also take advantage of the FLIR InSite workflow management tool. The mobile and desktop application work together to streamline the thermal inspection process, simplify data collection, and speed up reporting. By following the application's easy Prepare - Inspect - Deliver workflow, you can set up efficient survey routes and then run them from the mobile app during your inspection. While in the field, you can maintain accurate documentation by assigning thermal images and survey data directly to saved assets. Once you're finished with the survey, you can deliver inspection results through a secure and private client portal on the FLIR InSite cloud.



#7

ENSURE YOU GET A CAMERA WITH THE ERGONOMIC FEATURES THAT MAKE YOUR JOB AS EASY AS POSSIBLE TO MATCH THE WAY YOU LIKE TO WORK.

The camera's weight can be a significant concern if you'll be using it frequently or for extended periods of time. A lighter thermal camera will decrease strain on your shoulder and back during long inspections. A wide selection of compact, light point-and-shoot thermal cameras are available at surprisingly affordable prices and fit nicely into tool boxes, utility belts, and pouches.

Some models like the FLIR T-Series have lens systems that rotate up to 180°, allowing users to keep the viewing screen comfortably in front of them while rotating the optical block straight up or down to scan hard-to-reach targets – perfect for a day full of overhead bus duct inspections, looking behind motors, under work stations, and aiming from other challenging angles.

Another important thing to consider is the camera's interactive controls. Does it have dedicated buttons, direct-access menus, or both? A few extra simple buttons that are intuitively positioned can actually make the camera easier to use as opposed to relying on one button to step through menu options. Some cameras offer integrated touch screens as another advantageous way to access functions and features, including text and sketch notations.

And make sure your camera is outfitted with at least two batteries (Lithium ion or better) that can be quickly and easily switched out in the field so you can keep working efficiently.



#8

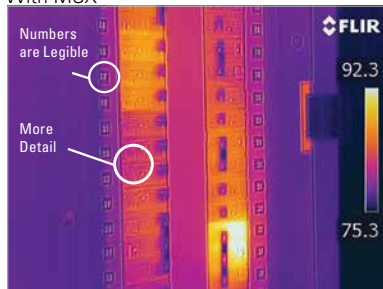
MSX THERMAL IMAGE ENHANCEMENT AND PICTURE-IN-PICTURE (P-I-P) WILL ALLOW YOU TO COMBINE THERMAL AND VISIBLE-LIGHT IMAGES FOR GENERATING REPORTS THAT ARE EASIER TO UNDERSTAND.

MSX® instantaneously adds visible spectrum details like numbers, labels, signage, and texture to the thermal image without obscuring or diluting the infrared scene. This onboard, real-time FLIR feature makes it much easier to immediately recognize where the heat issue is. P-i-P is another onboard mode that can be used for clearer documentation, allowing thermographers to inset a thermal image over its corresponding visible-light photo. Both choices help better-communicate the location of a problem to customers, colleagues, and repair crews.

Without MSX



With MSX



Without MSX



With MSX



Picture-in-picture (P-i-P)



#9

NOT ALL REPORTING SOFTWARE PRODUCTS ARE CREATED EQUAL: BE SURE TO TRY OUT THE PRODUCT FIRST TO FIND THE ONE THAT'S RIGHT FOR YOU.

Reporting is an indispensable feature in an infrared program or business. Clients, from individual home owners to large corporations, require documentation of your findings. Thermal image and report data can be a key element in a wide range of applications: energy audits, electrical inspections, gas detection surveys, building envelope analyses, and predictive maintenance programs. They're often used to initiate insurance claims and substantiate restoration repairs.

Today, most infrared cameras come with free software that allows you to perform basic image analysis and to create simple reports. Advanced software for more in-depth analysis and customizable reports is also available, allowing you to take full advantage of your camera's capabilities and features. FLIR Thermal Studio Pro, for example, offers batch processing for faster thermal image and video analysis. When paired with the optional FLIR Route Creator plug-in, users can create inspection paths and download them directly to a FLIR T-Series camera that has Inspection Route software. These routes help inspectors acquire data and thermal images in a logical sequence and maintain historical records for improved predictive maintenance.

Some FLIR thermal imagers allow the generation of instant reports right in the camera and/or using an app on mobile devices connected to Wi-Fi enabled cameras. IR analysis software can perform a wide range of tasks from simple spot measurements to custom radiometric calibrations. FLIR and third party providers also offer software packages designed for a range of specific applications – from building inspection to advanced research and development. Investigate these tailored software programs to see which may make the most sense for your business.



#10

CHOOSE A THERMAL IMAGER WITH A WIDE TEMPERATURE RANGE SO YOU CAN MEASURE AMBIENT AND HIGH-TEMPERATURE SPOTS IN THE SAME IMAGE.

A camera's temperature range and sensitivity are important considerations. The range tells you what the minimum and maximum temperatures are that the camera can measure (-20°C to 1500°C/-4°F to 2732°F is a typical example). Select an IR camera with a temperature range broad enough to capture all of the temperatures of the objects or scenes you typically encounter.

Sensitivity shows you the smallest temperature difference between two objects that the camera can discern (0.05°C/0.09°F, for example). The more sensitive the detector, the subtler the details you'll be able to see, which can be especially helpful when inspecting for moisture intrusion and other heat issues with minute temperature variations.

#11

LOOK FOR CAMERAS WITH A COMPREHENSIVE, EXTENDED WARRANTY PROGRAM TO PROTECT YOUR INVESTMENT FOR THE LONG HAUL.

Program like the FLIR 2-10 warranty go a step further by offering two years of coverage on parts and labor and ten years of coverage for the IR detector. Before you buy, ensure the camera you selected comes with a solid warranty that will give you peace of mind.



* After product registration on www.flir.com

#12

MAKE SURE YOUR INVESTMENT IN AN INFRARED CAMERA IS BACKED BY A MANUFACTURER WHO WILL PROVIDE ONGOING TECHNICAL SUPPORT AND TRAINING.

The quality of customer service and the depth of technical support available should be integral to your decision on which infrared camera to purchase.

Not only is FLIR the world's leading manufacturer of infrared cameras for commercial applications, it also founded the ITC, the world's largest infrared training center. Make the most of your investment, advance your career, and enhance your value to your organization with an accredited certification.

Professional photographers get extensive training and it shows in their work. The same is true for your craft as a thermographer, and ITC can help. An Infrared Training Center certification is written proof of your expertise in operating your camera and interpreting the thermal information it provides.

Summary

This booklet gives you the essential information in a nutshell that you need to consider to intelligently shop for an infrared camera. Now it's up to you to do your homework. Put together a list of features that you know you'll need and a wish list of features that may be outside what you think is your price range, but could be beneficial to you in the future. Create a list of the questions about specific camera performance relating to your application. And ask for a demo in your work environment. Why? An infrared camera may work just fine in an air conditioned conference room, but you need to know how well it will perform under your worksite's real-world environmental conditions.

FLIR product experts, software and technical support technicians, direct sales engineers, application specialists, and a growing base of excellent distribution partners, are happy to answer any questions you might have. Give us a call and we'll connect you with the right resource.

To speak to a thermal imaging expert and discuss your application, please contact Francis at

Phone 021 2466855

Email francis@pro-test.co.nz

CORPORATE HEADQUARTERS

FLIR Systems, Inc.
27700 SW Parkway Ave.
Wilsonville, OR 97070 USA
PH: +1 866.477.3687

NASHUA

FLIR Systems, Inc.
9 Townsend West
Nashua, NH 03063 USA
PH: +1 866.477.3687

EUROPE

FLIR Systems
Luxemburgstraat 2
2321 Meer Belgium
PH: +32 (0) 3665 5100

CANADA

FLIR Systems, Ltd.
920 Sheldon Court
Burlington, ON L7L 5K6
Canada
PH: +1 800.613.0507

CHINA

FLIR Systems Co., Ltd
Rm 1613-16, Tower II
Grand Central Plaza
138 Shatin Rural Committee Rd
Shatin, New Territories
Hong Kong
PH: +852 2792 8955

LATIN AMERICA

FLIR Systems Brasil
Av. Antonio Bardella,
320 Sorocaba, SP 18085-852
Brasil
PH: +55 15 3238 8070



The World's **Sixth Sense**®

Equipment described herein is subject to US export regulations and may require a license prior to export. Diversion contrary to US law is prohibited. Imagery for illustration purposes only. Specifications are subject to change without notice. ©2019 FLIR Systems, Inc. All rights reserved. 12/2019

19-2900-INS-FLIR